

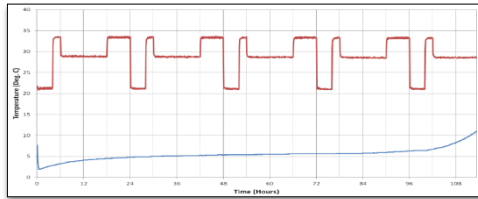


(866) 469-6019 | VeriCorMed.com | info@vericormed.com

Cool Cubes™



Save Time



Protect Product



Save Money

**Varicella
MMRV/Zoster
FFP**

*@ Frozen Freezer
Temperatures*

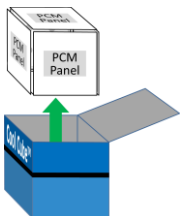
**Vaccine
Medicine
Blood Products**

*@ Fresh Fridge
Temperatures*

**Platelets
FFPE
Biospecimens**

*@ Warm Room
Temperatures*

Safe, easy container & pack-out systems for temperature sensitive product.



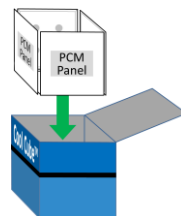
1 Remove
PCM Panels



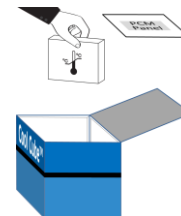
2 Condition
PCM Panels



3 Prep*
PCM Panels



4 Assemble
PCM Panels



5 Pack-Out
Product



6 Close
Bag/Case

Why a Cool Cube™?

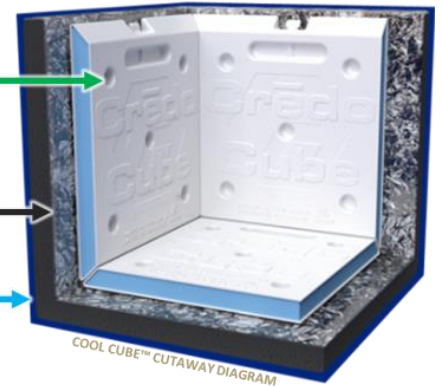
To protect product.

- ✓ **SAFE.** The lab validated, qualified pack-out system uses flat, PCM panels instead of bulky, inconsistent ice/gel packs or condensers with moving parts.
- ✓ **CONSISTENT.** Patented, beveled-edge PCM panels form a chamber to surround the product and create a stable temperature throughout.
- ✓ **LONG-LASTING.** Surround-Care™ Insulation (VIPs) minimize the effect outside temperatures have on the PCM.

Temperature
Regulating
Panels

Insulation

Bag/Case



To save time.

- ✓ **SIMPLE.** Patented PCM system shortens the pack-out process and reduces time spent on training & SOP procedures.
- ✓ **EFFICIENT.** Pockets, wheels, handles, and straps enable users to easily manage product in a safe, effective way.
- ✓ **QUALIFIED.** Lab verified system eliminates the need for lengthy validation processes.

To save money.

- ✓ **MULTI-PURPOSE.** Use for off-site transport, remote locations, & on-site emergency backup during power outages.
- ✓ **REDUCE.** Reusable components eliminate purchasing of supplemental supplies (ice/gel packs, buffering material).
- ✓ **DURABLE.** Patented components (reinforced VIPs & specially coated PCM panels) ensure a long life span to decrease operational costs for years to come.



	Size Exterior Dims Tare Weight	03 11"x11"x11" ≈ 11 lbs.	08 16"x11.5"x11.5" ≈ 16 lbs.	28 21"x22"x23" ≈ 62 lbs.	96 21"x22"x23" ≈ 112 lbs.
<i>Examples</i>	Type	Model/Hold Time	Model/Hold Time	Model/Hold Time	Model/Hold Time
Vaccine Medicine	Fridge 2° to 8°C	VT-03 >65 hrs.	VT-08 >76 hrs.	VT-28 >103 hrs.	VT-96 >126 hrs.
Blood Products	Fridge 1° to 10°C 1° to 6°C	BT-03 >70 hrs. >39 hrs.	BT-08 >83 hrs. >53 hrs.	BT-28 >108 hrs. >68 hrs.	BT-96 >128 hrs. >112 hrs.
VAR/FFP MMRV/LZV	Frozen -50° to -15°C	FT-03 >62 hrs.	FT-08 >60 hrs.	FT-28 >94 hrs.	FT-96 >139 hrs.
FFPE/Bio Platelets	Room 15° to 25°C 20° to 24°C	RT-03 >91 hrs. >47 hrs.	RT-08 >83 hrs. >66 hrs.	RT-28 >79 hrs. >29 hrs.	RT-96 >132 hrs. >56 hrs.

Hours indicate how long internal temps were within range during summer profile tests (cycling between 22°C/72°F and 35°C/95°F). Technical documents available upon request.

VeriCorMed.com/CoolCubes

(Prices, Spec Sheets, Features, Pictures, Videos, Testimonials, User Guides, FAQs)